

HMI + HMI PAC

- + All in one hardware
- + HMI, Softplc (IEC11131), Integrated softmotion library
- + Ethercat real time fieldbus
- + Canopen real time fieldbus
- + Single programming software suite

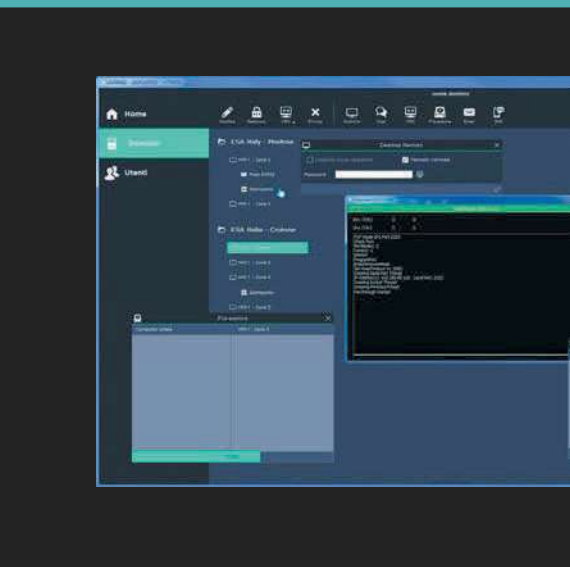


	EW104	EW107	EW112	EW115
Display Size	4.3"	7"	12,1"	15,6"
Display Technology	TFT	TFT	TFT	TFT
Display Colors	262K	16 M	16 M	16 M
Display Resolution (pixel)	480X272	800x480	1280x800	1366x768
Processor	ARM Cortex A8	ARM Cortex A8	ARM Cortex A8	ARM Cortex A8
RAM	256 MB DDR3	256 MB DDR3	512 MB DDR3	512 MB DDR3
Flash	3 GB	3 GB	3 GB	3 GB
NVRAM	32 Kb (SoftPLC)	32 Kb (SoftPLC)	32 Kb (SoftPLC)	32 Kb (SoftPLC)
Fieldbus	EtherCAT / CANopen	EtherCAT / CANopen	EtherCAT / CANopen	EtherCAT / CANopen
Ethernet (Ethercat Master)	1 x 10/100Mb	2 x 10/100Mb	2 x 10/100Mb	2 x 10/100Mb
Power Supply (Vdc)	18 – 32	18 – 32	18 – 32	18 – 32
Consumption (W)	4	7	15	19
External dimensions(W/H/D) (mm)	166X112X45.9	202 x 142 x 45,9	340.4X238.5X48.6	436.5X285.5X54.4
Cut-out dimensions (W/H) (mm)	158.5X104.5	195.0 x 135.0	326.0X227.0	422.5X271.5
Weight (kg)	0.5	0,8	2.5	4.5
I/o Slot (AC Version)	4	8	12	16
PORTS	SP1 RS232/485-MPI-COM0		SP2 RS232/485-MPI-COM0	PROFIBUS
	1 USB HOST 1USB Device		2 USB HOST 1USB Device	
Humidity	<90% (non condensing)			
PORTS	SP1 RS232/485-MPI-COM0		SP2 RS232/485-MPI-COM0	PROFIBUS
	1 USB HOST 1USB Device		2 USB HOST 1USB Device	
Protection degree (front)	IP 66			
Certifications	CE / EN60068-2-6 / EN60068-2-27 / Humidity EN60068-2-30 cULus (Certificate no. E189179) / EAC ATEX 2014/34/UE directive Group II Category 3 G D Zone 2/22 (12"DNV)			

- + IEC61131 Soft PLC Codesys version Esaware HMI EW1XXAB and AC
- + ESA Motion Library version Esaware HMI EW1XXAB7 and AC7
- + TASK Motion C version Esaware HMI EW1XXAB9CN only with CANOpen

CREW 3.0

- + Custom keyboards
- + Pipeline automatic tags' data transfer between different communication drivers
- + Advanced Fonts Managements
- + Page Templates and Customized Widgets
- + Tags Offset - index for a direct mapped to manage PLCs' data blocks.
- + New Color Palette customizable
- + Import export via XML and CSV format
- + New Graphic Libraries
- + Import customized SVG object

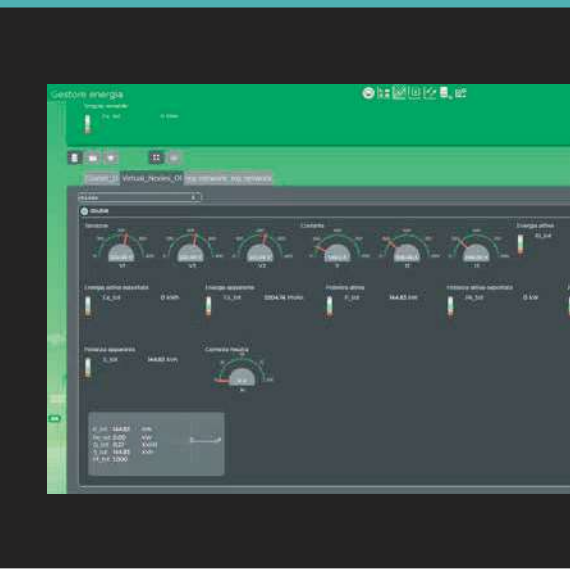
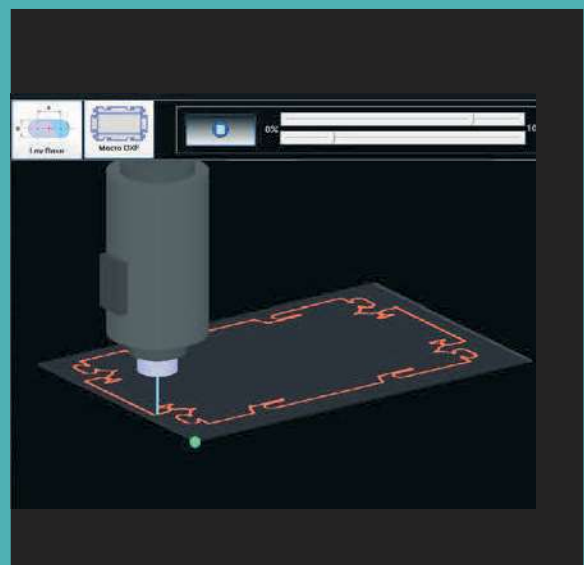


EVERYWARE

- + Cloud based solution both for maintenance and data collection
- + Standard https protocol; no need of any firewall nor IT policy modifications
- + Encrypted VPN based on TLS 1.2 security protocol
- + Integrated chat support
- + Integrated file transfer utility
- + VPN and passthrough for direct connection to the remote controller

MOTION SOLUTIONS

- + PLC IEC 61131 I
- + ESA libraries for Single axis movement both in positioning and speed mode
- + Speed mode is in open loop
- + Ethercat and Canopen integrated fieldbus
- + Custom real time "C code" motion task
- + Advanced multi axis functionalities
 - + Axis interpolation
 - + Electronic Gearing
 - + Gantry



DMC (DATA MANAGERS IN CLOUD)

Cloud based application for the data collection and analysis

- | | | |
|--|---|--|
| <ul style="list-style-type: none"> + Main components: + Dashboard + Energy manager + Widget manager + Virtual variables + | <ul style="list-style-type: none"> + Main data visualization: + Day time cost table + Trend widget with integrated threshold + Trend with average highlight + Trend with time comparison + Bar chart widget | <ul style="list-style-type: none"> + Main data analysis: + Heatmap diagrams + Correlation + KPIs + + |
|--|---|--|

Serial Protocols

- + **Allen Bradley**
 - DF1 – SLC 5 series
 - PLC5 – ControlLogix 5 series
- + **Control Techniques**
 - CT Modbus protocol (Modified, Unidrive M)
 - CT Modbus protocol (Standard)
- + **ESA**
 - NMEA-0183 protocol
 - SoftMotion (Master)
- + **Fatek**
 - Fatek FB series
- + **HSD**
 - SMC13x protocol
- + **Mettler Toledo**
 - SICS protocol
- + **Mitsubishi**
 - FX2 / FX3 protocol
 - FX5 “MC binary type” protocol
- + **Modbus**
 - RTU Master protocol
 - RTU Slave protocol
- + **Omron**
 - FINS protocol
- + **Panasonic**
 - FP / SIGMA protocol
- + **Schneider**
 - RTU Modbus specific protocol
- + **Siemens**
 - MPI protocol
 - PPI protocol (Slave mode)

Ethernet Protocols

- + **Allen Bradley**
 - Ethernet IP - CompactLogix series
 - Ethernet IP – Micro800 series
 - Ethernet IP - MicroLogix series
- + **Beckhoff**
 - TwinCAT ADS
- + **Control Techniques**
 - CT Modbus protocol (Modified, Unidrive M)
 - CT Modbus protocol (Standard)
- + **ESA**
 - CoDeSys SoftPLC (for generic PLC)
 - SoftMotion (Master)
 - Web Server
- + **Fanuc Corporation**
 - Focas2 CNC protocol
 - SNP-X protocol
- + **Fatek**
 - Fatek FB series (Tcp/IP)
- + **Ge Fanuc**
 - SRTP protocol
- + **KEB**
 - CombiControl C5
- + **Mitsubishi**
 - FX3-ENET “MC binary type” protocol
 - FX5 “SLMP binary type” protocol
- + **Modbus**
 - Master protocol TCP/IP
 - Slave protocol TCP/IP
- + **Omron**
 - Ethernet/IP – NJ-NX series
 - FINS protocol (TCP)
 - FINS protocol (UDP)
 - G9SP series (Safety PLC)
- + **Robox**
 - BCC/31 protocol
- + **Saia**
 - Ether-S-Bus
- + **Schneider**
 - RTU Modbus specific protocol
 - TSX series eith ETZ module / Modbus
- + **Siemens**
 - Industrial Ethernet protocol (for LOGO)
 - Industrial Ethernet protocol (for S7-1200/1500 cpu)
 - Industrial Ethernet protocol (for S7-200 Smart cpu)
 - Industrial Ethernet protocol (for S7-3/400 cpu)
- + **Wago**
 - 750-8XX